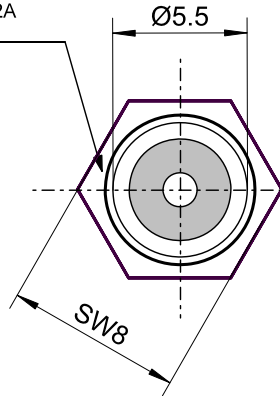
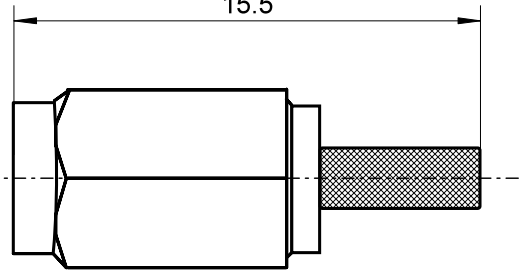


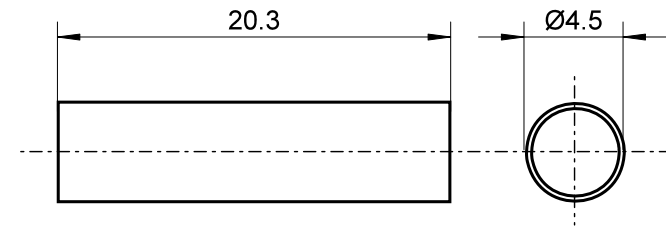
Innengewinde / inner thread  
1/4-36 UNS-2A



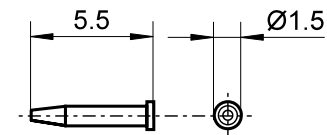
Stecker / plug  
15.5



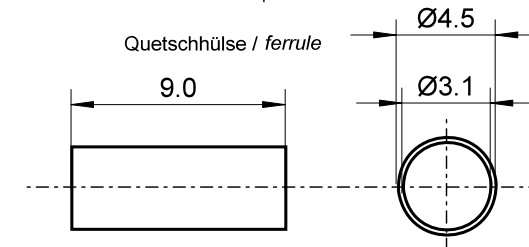
Schrumpfschlauch / shrink tube



Mittelpin / central pin



Quetschhülse / ferrule



- RP-SMA Crimpstecker
- für RG-174 und RG-316
- SMA Reverse
- vergoldet
- Impedanz: 50 Ohm
- mit Schrumpfschlauch
- RoHS-konform

- RP-SMA crimp plug
- for RG-174 and RG-316
- SMA Reverse
- gold plated
- with shrink tube
- impedance: 50 ohms
- RoHS compliant

### Änderungen

Datum	Name	gez.:	Datum	Name
08.02.2013	tf	gepr.:	13.08.2009	li
		Norm.:		

Bezeichnung	Blatt
RP-SMA STECKER CRIMP RG174/RG316	
Zeichnungs-Nr.:	von
51695	

